

Sri Lanka Institute of Information Technology



CHAT-BOT SYSTEM FOR COMPUTERS, ACCESSORIES & REPAIR CENTER RECOMMENDATION

IT20125998

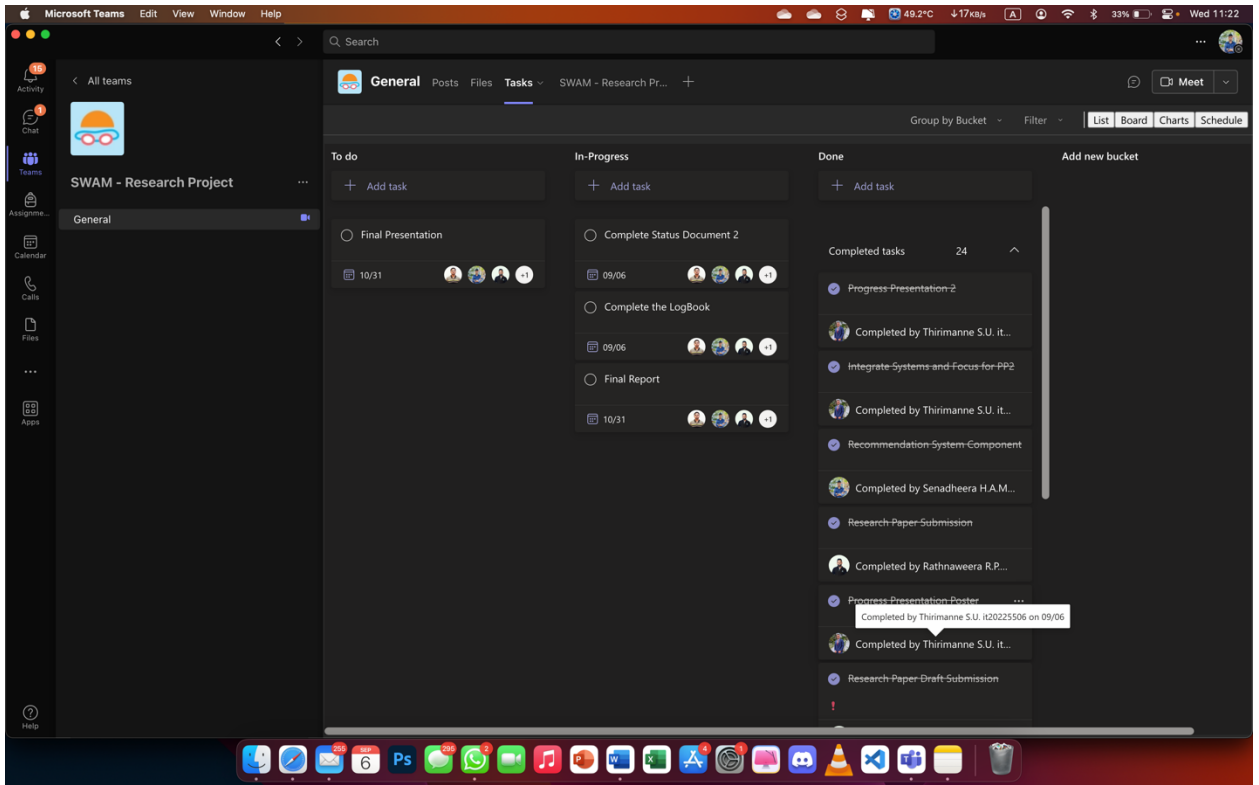
Senadheera H.A.M

TMP – 23 – 283

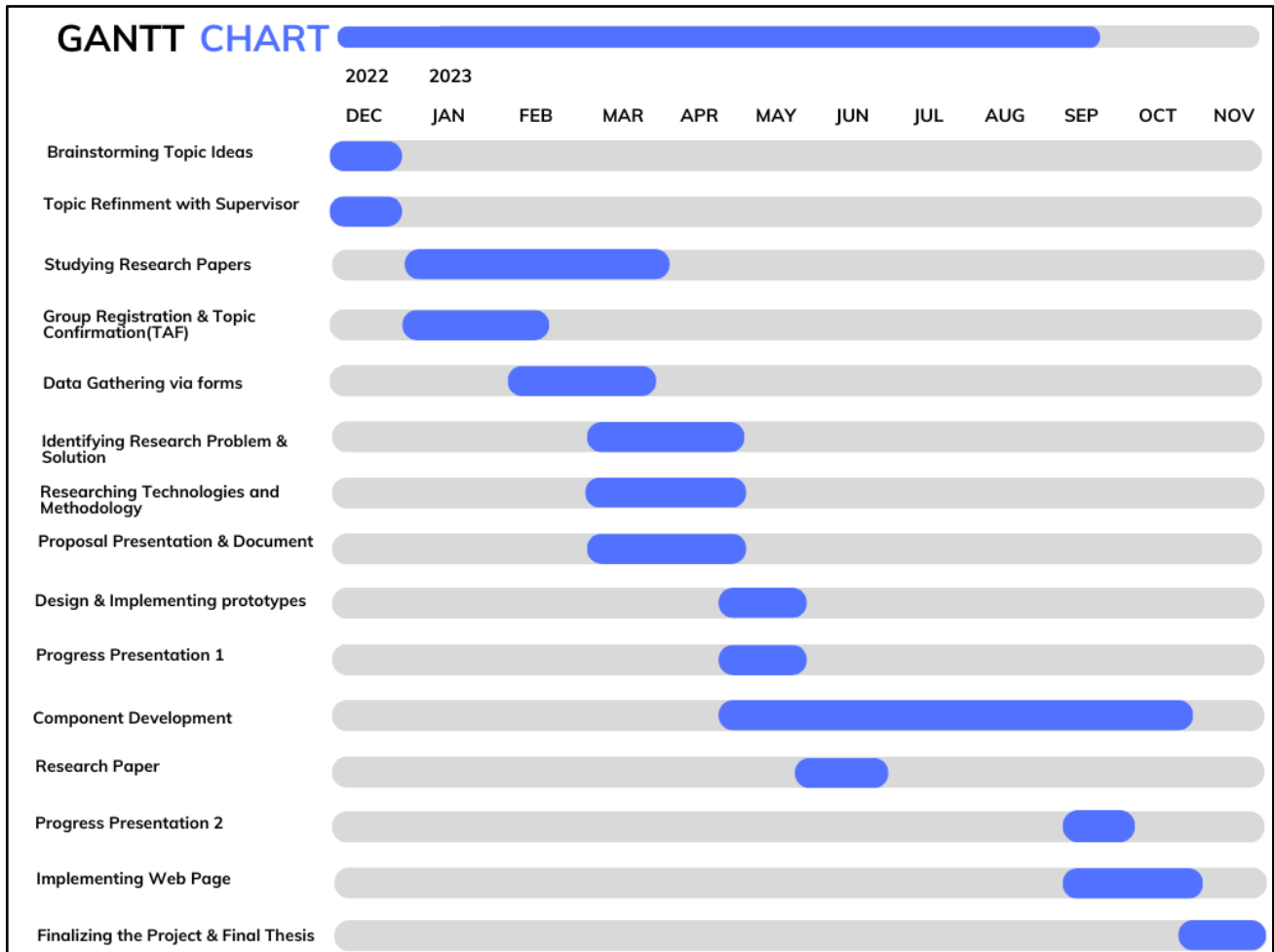
Table of Contents

1.	Communication	3
1.1	Creating the proposal presentation.	3
1.2	Integrating the system	3
2.	Microsoft Planner and Project Management	4
3.	Gantt Chart	5
4.	Work Breakdown Structure	6
5.	Gitlab Commits	7

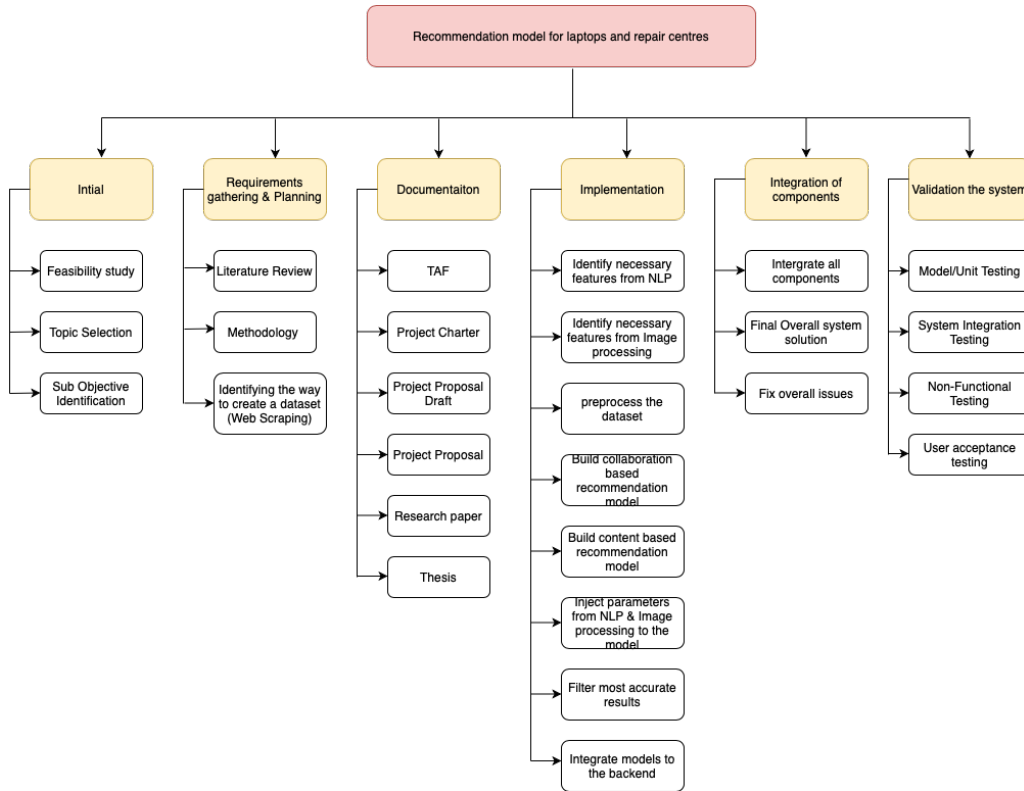
2. Microsoft Planner and Project Management



3. Gantt Chart



4. Work Breakdown Structure



5. Gitlab Commits

The screenshot displays the GitLab interface for the repository 'TMP-23-283'. The left sidebar contains navigation options: Project overview, Repository (Files, Commits, Branches, Tags, Contributors, Graph, Compare), Issues (0), Merge Requests (0), CI/CD, Operations, Analytics, Wiki, Snippets, and Members. The main content area shows the 'Commits' page for the repository. At the top, there is a search bar and a 'Create merge request' button. The commits are listed in chronological order, grouped by date. The most recent commit is from 04 Sep, 2023, with 4 commits. The previous day, 03 Sep, 2023, has 25 commits. Each commit entry includes a commit icon, a title, the author's name, the time since the commit, and a commit hash with a copy icon and a trash icon.

Date	Commit Count	Commit Title	Author	Time Ago	Commit Hash
04 Sep, 2023	4	updates to laptop classification	Minindu Senadheera	2 days ago	f9535f5a
		Merge branch 'master' into 'IT20125998Senadheera'	Minindu Senadheera	2 days ago	89e899ff
		Merge branch 'IT20155520Amanullath' into 'master'	Amanullath M. U	2 days ago	769eb8b0
		add repair center recommendations in the chatbot and adjust image classification	Amanullath M. U	2 days ago	63ee6e0e
03 Sep, 2023	25	Merge branch 'IT20155520Amanullath' into 'master'	Amanullath M. U	2 days ago	851e9a51
		add model-best	Amanullath M. U	2 days ago	b933ab15
		Merge branch 'IT20125998Senadheera' into 'master'	Amanullath M. U	2 days ago	de9c1b28
		classification	Minindu Senadheera	2 days ago	45c4f839
		Merge branch 'IT20155520Amanullath' into 'master'	Amanullath M. U	2 days ago	5da3ab51
		change the project folder structure and fix minor bugs	Amanullath M. U	2 days ago	f3801995
		Merge branch 'master' of http://gitlab.sliit.lk/tmp-23-283/tmp-23-283 into IT20155520Amanullath	Amanullath M. U	3 days ago	ecb77534
		Merge branch 'IT20125998Senadheera' into 'master'	Amanullath M. U	3 days ago	8d9641c7